

MANNESMANN REXROTH	Check Valve, Hydraulic Pilot Operated, Type Z2S 10, Series 3X			RE 21 553/10.95
	Size 10	up to 315 bar	up to 120 L/min	Replaces: 04.92

Characteristics:

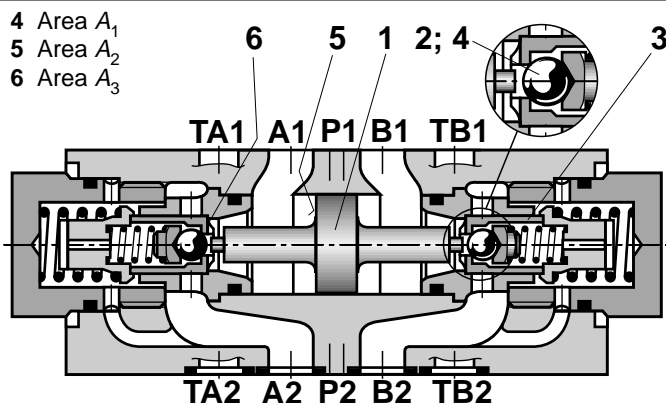
- Sandwich plate valve
- Porting pattern to DIN 24 340 form A, ISO 4401 and CETOP-RP 121 H
- For the leak free closure of one or two service ports
- 4 cracking pressures, optional



K 4258/1
Type Z2S 10 -1-3X/...

Functional description, section

Hydraulic pilot operated check valves type Z2S are of sandwich plate design. They are used for the leak-free closure of one or two service ports, even for long periods of time. Free flow occurs from A1 to A2 or B1 to B2. Flow in the opposite direction is blocked. When fluid flows from A1 to A2, the spool (1) is pressurised and is pushed to the right, thereby opening the ball poppet valve (2) which then opens the sleeve (3). In order to ensure correct closing of the valve, the service ports of the directional valve must be connected to tank in the neutral position. (See circuit example).



Ordering codes

Sandwich plate Check valve, size 10	Z2S 10	- 3X/	*	
Leak free closure of ports A and B	= -			
Leak free closure of port A	= A			
Leak free closure of port B	= B			
Cracking pressure 1,5 bar	= 1			
Cracking pressure 3 bar	= 2			
Cracking pressure 6 bar	= 3			
Cracking pressure 10 bar	= 4			

3X =

No code = NBR seals

V = FPM seals (other seals on request)

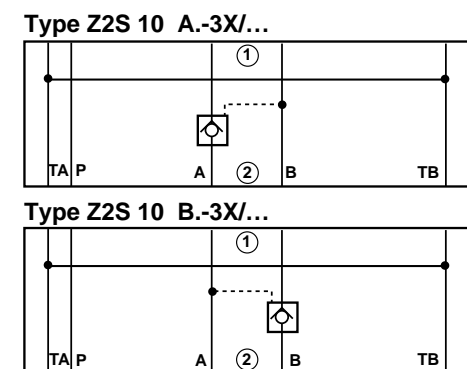
⚠ Attention!
The compatibility of the seals and fluid type has to be taken into account!

Series 30 to 39
(30 to 39: externally interchangeable)

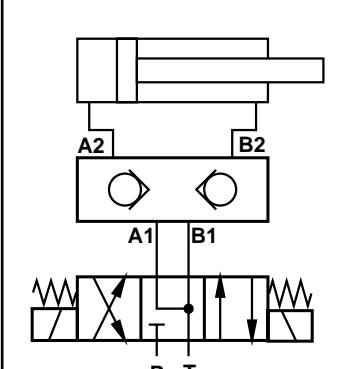
Valve types which are marked in grey are readily available!

Further details in clear text

Symbols (1) = Valve side, (2) = Subplate side)



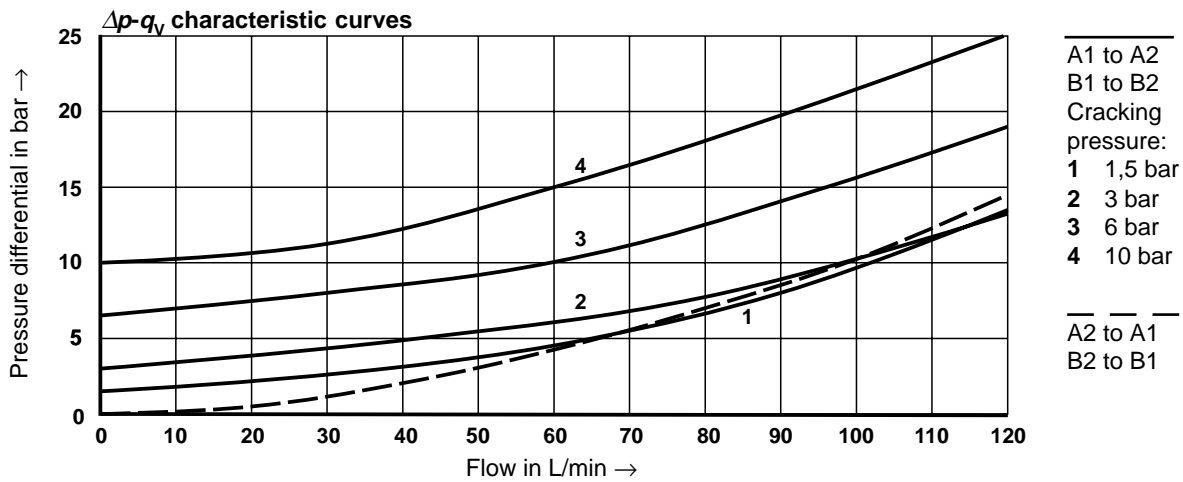
Typical circuit



Technical data (For operation outside these parameters, please consult us!)

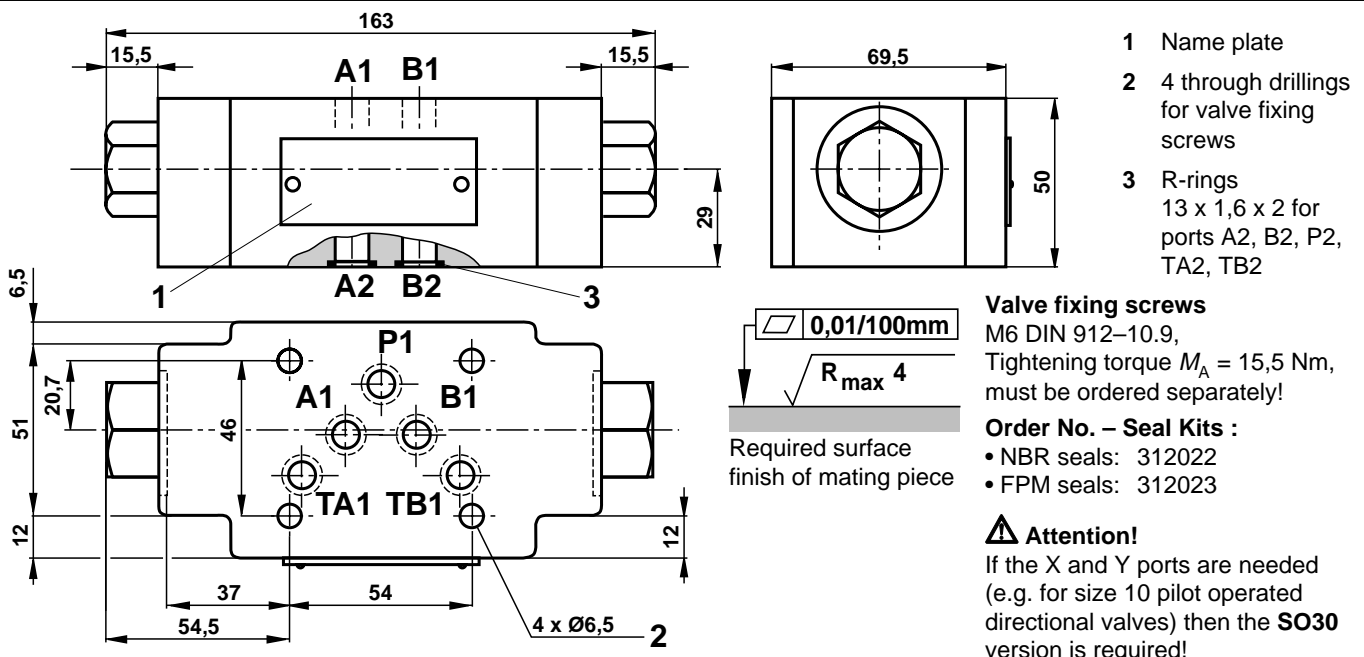
Pressure fluid 1) suitable for NBR and FPM seals 2) only suitable for FPM seals	Mineral oil (HL, HLP) to DIN 51 524 ¹⁾ ; Fast bio-degradable pressure fluids to VDMA 24 568 (see also RE 90 221); HETG (rape seed oil) ¹⁾ ; HEPG (polyglycol) ²⁾ ; HEES (synthetic ester) ²⁾ ; other fluids on request
Degree of contamination	Maximum degree of contamination of the fluid is to NAS 1638 class 9. We, therefore, recommend a filter with a minimum retention rate of $\beta_{10} \geq 75$
Pressure fluid temperature range °C	-30 to +80 for NBR seals -20 to +80 for FPM seals
Viscosity range mm ² /s	2,8 to 500
Operating pressure, max. bar	up to 315
Flow, max. L/min	up to 120
Direction of flow	see symbols
Cracking pressure in free flow direction	see characteristic curves
Area ratio	$A_1/A_2 = 1/11,45$; $A_3/A_2 = 1/2,86$ (see sectional drawing on page 1)
Weight kg	approx. 3

Characteristic curves (measured at $v = 41 \text{ mm}^2/\text{s}$ and $t = 50 \text{ }^\circ\text{C}$)



Unit dimensions

(Dimensions in mm)



Mannesmann Rexroth GmbH
 D-97813 Lohr am Main
 Jahnstraße 3-5 • D-97816 Lohr am Main
 Telefon 0 93 52 / 18-0 • Telefax 0 93 52 / 18-10 40
 Telex 6 89 418-0

Mannesmann Rexroth Limited
 Cromwell Road, St. Neots,
 Huntingdon, Cambs. PE19 2ES
 Tel: (01480) 476041
 Fax: (01480) 219052