

**MANNESMANN  
REXROTH****Check valve type S****RE  
20 375/06.97**

Replaces: 10.95

Sizes 6 to 30

up to 315 bar

up to 450 L/min

**Features:**

- For threaded connection (screw-in connection)
- Leakage-free closure in one direction
- Various cracking pressures, optional (see ordering details)

**Symbols**

(without spring)



F 87 016

**Ordering details**

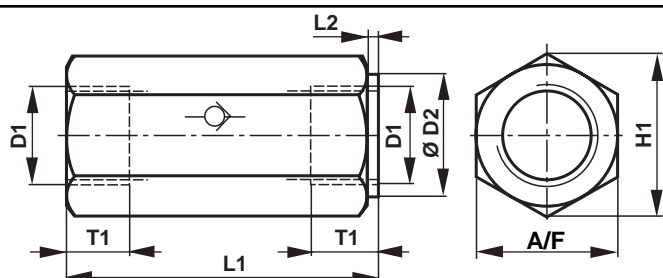
	<b>S</b>		<b>A</b>		<b>.</b>	<b>/</b>	<b>*</b>	
Nominal size 6	= 6							Further details in clear text Revision index (defined by the factory)  Cracking pressure see characteristic curves, page 2
Nominal size 8	= 8							
Nominal size 10	= 10							
Nominal size 15	= 15							
Nominal size 20	= 20							
Nominal size 25	= 25							
Nominal size 30	= 30							
For threaded connection			= A					0 = without spring 1 = standard 2 = 3 = 5 =

**Technical data** (for applications outside these parameters, please consult us!)

Max. operating pressure	bar	315						
Cracking pressure		see characteristic curve, page 2						
Maximum flow		see characteristic curve, page 2						
Pressure fluid		Mineral oil (HL, HLP) to DIN 51 524; Fast bio-degradable pressure fluids to VDMA 24 568 (also see RE 90 221); HTEG (rape seed oil); HEPG (polyglycol); HEES (synthetic ester); other fluids on request						
Pressure fluid - temperature range	°C	– 30 to + 80						
Viscosity range	mm <sup>2</sup> /s	2.8 to 500						
Degree of contamination		Maximum permissible degree of contamination of the fluid is to NAS 1638 class 9. We, therefore, recommend a filter with a minimum retention rate of $\beta_{10} \geq 75$ .						
Weight	kg	Size 6	Size 8	Size 10	Size 15	Size 20	Size 25	Size 30
		0.1	0.2	0.3	0.5	1.0	2.0	2.5

**Unit dimensions**

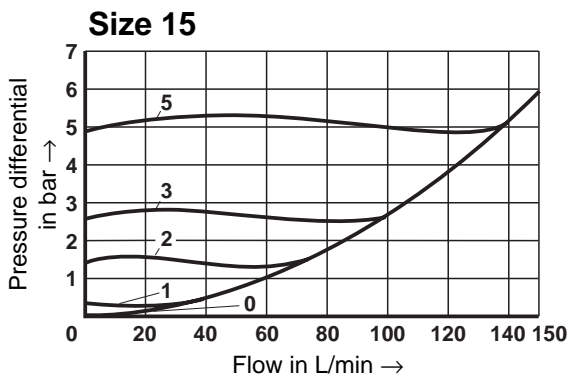
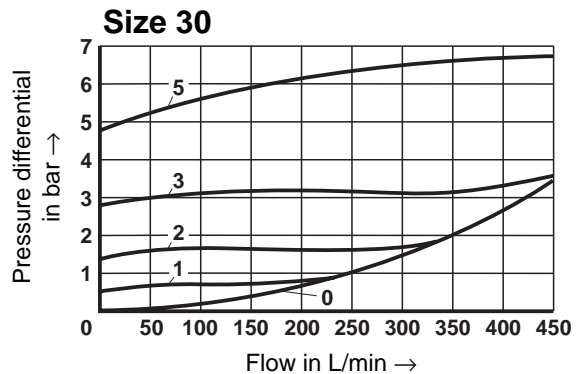
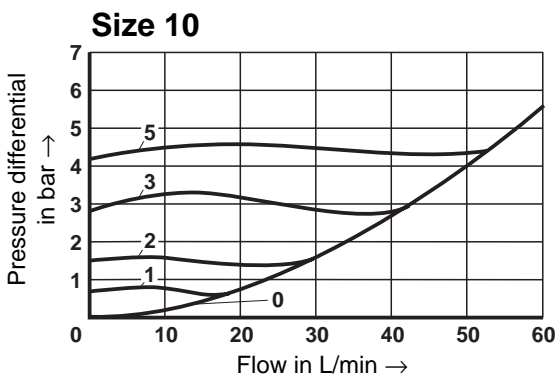
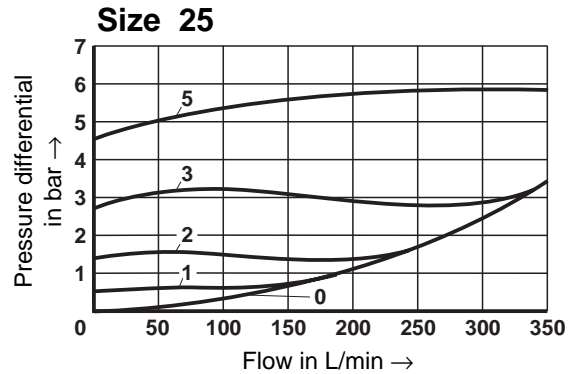
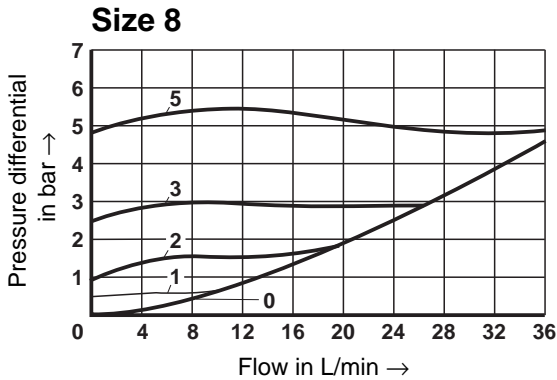
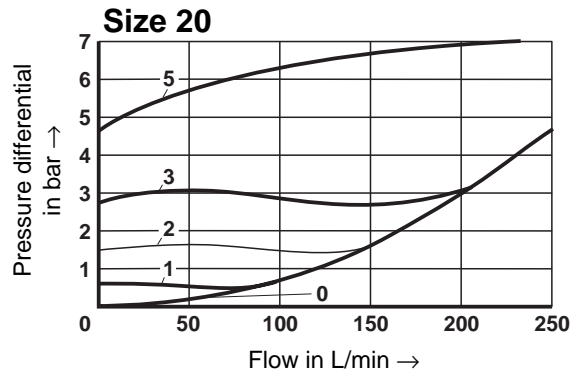
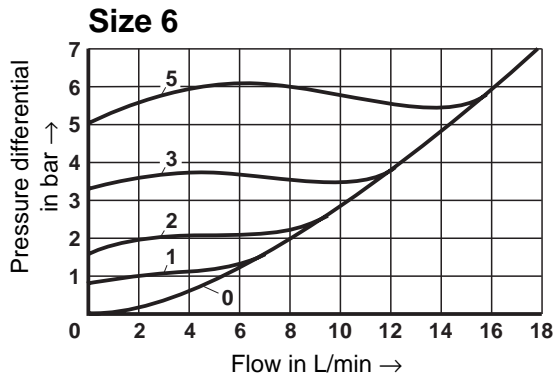
(Dimensions in mm)



Pipe thread "G" to ISO 228/1

	Size 6	Size 8	Size 10	Size 15	Size 20	Size 25	Size 30
<b>D1</b>	G 1/4	G 3/8	G 1/2	G 3/4	G 1	G 1 1/4	G 1 1/2
<b>ØD2</b>	19	24	30	36	46	60	65
<b>H1</b>	22	28	34.5	41.5	53	69	75
<b>L1</b>	58	58	72	85	98	120	132
<b>L2</b>	2	2	2	2	2	2	2
<b>T1</b>	12	12	14	16	18	20	22
<b>A/F</b>	19	24	30	36	46	60	65

**Characteristic curves** (measured at  $\nu = 41 \text{ mm}^2/\text{s}$  and  $\vartheta = 50 \text{ }^\circ\text{C}$ )



Pressure differential  $\Delta p$  related to flow  $q_v$  at cracking pressure



**Mannesmann Rexroth GmbH**  
 D-97813 Lohr am Main  
 Jahnstraße 3-5 • D-97816 Lohr am Main  
 Telefon 0 93 52 / 18-0 • Telefax 0 93 52 / 18-10 40  
 Telex 6 89 418

**Mannesmann Rexroth Limited**  
 Cromwell Road, St. Neots,  
 Huntingdon, Cambs. PE19 2ES  
 Tel: (01480) 476041  
 Fax: (01480) 219052